

聖母訪親堂區  
VISITATION PARISH

# 堂區牧民議會架構建議

## PARISH PASTORAL COUNCIL ORGANIZATION PROPOSAL

(修訂 / Rev. 0)

2022年7月10日 | JULY 10, 2022



1. 堂區牧民議會為一諮詢機構，藉此信友可履行領洗義務，與堂區神長合作，為堂區的發展謀福祉。  
The Parish Pastoral Council (PPC) is a consultative body in which the faithful, exercising their baptismal responsibilities, collaborate with the parish priest in the development of the parish.
2. 神長與教友，各就其崗位，組成合作夥伴，帶領及積極推動堂區的職務。  
It is a leadership group through which priests and people work together as partners in furthering the mission of Christ in their own place.
3. 訪親堂區包括：  
The Visitation Parish includes:
  - a. 東涌的聖母訪親小堂  
Our Lady of Visitation Chapel at Tung Chung
  - b. 愉景灣的聖三一小堂  
Trinity Chapel at Discovery Bay
  - c. 機場團體  
Airport Community



1. 堂區牧民議會鼓勵和使堂區的教友和善會團體能參與教會生活，並為堂區的項目發展和活動計劃作出貢獻。  
The PPC is to encourage and enable all parishioners and all Parish organisations to participate in the life of the church by contributing to the planning and development of all projects and activities of the Parish.
2. 堂區牧民議會以共負責任的精神把堂區建立成一個朝氣勃勃的團體，推動信、望、愛。  
The PPC shares the responsibility for building the parish into a vibrant Catholic community that promotes Faith, Hope and Love.

我們嶄新的理念標語總括了我們的**遠景及使命**：  
Our new tagline sums up our **Vision & Mission**:

**建立團體、與基督相遇、傳揚福音。**  
**BUILD COMMUNITY. ENCOUNTER CHRIST. SPREAD THE GOSPEL.**



堂區牧民議會 - 評議會  
PARISH PASTORAL COUNCIL  
- CENTRAL COMMITTEE



常務小組  
STANDING COMMITTEE

傳道組 | Evangelization Group \*

- 成人慕道班 | Adult Catechism Class
- 主日學 | Sunday School
- 傳訊 / 數碼組 | Information & Media Group (包括: 網頁組、攝影組 及 堂區通訊組)

禮儀組 | Liturgical Group \*

- 禮儀服務組 | Liturgical Service Group
- 聖言宣讀組 | Lectors Group
- 非常務送聖體組 | Extraordinary Minister of Holy Communion
- 聖則濟利亞歌詠團 | St. Cecilia's Choir
- 星期六歌詠團 | Saturday Choir
- 輔祭組 | Altar Service Group
- 插花組 | Flower Arrangement Group
- 善別組 | Bereavement Group

培育組 | Christian Formation Group \*

青少年牧民組 | Youth Pastoral Group \*

服務組 | Service Group \*

- 總務組 | General Affairs Group (主日接待員)
- 長者關愛組 | Home for the Elderly Visiting Group
- 家庭探訪組 | Family Visiting Group
- 聖物組 | Catholic Gift Group

文康組 | Entertainment Group\*

- 堂家組 | Family Life Group

幹事會  
EXECUTIVE COMMITTEE

團體  
COMMUNITY

- 機場團體 | Airport Community \*
  - 愉景灣中文團體 | Discovery Bay Chinese Community \*
  - 愉景灣英文團體 | Discovery Bay English Community \*
  - 東涌英文團體 | Tung Chung English Community \*
  - 其他信仰小組 | Other small communities of Faith
- 聖母軍訪親支團 (聖母軍中文成年支團) | Our Lady of Visitation Praesidium (Legion of Mary Chinese Senior Praesidium)

專責小組  
SPECIAL TASK FORCE

- 選舉專責小組 | Election Committee
- 新聖堂籌建委員會 | New Church Building Committee
- 堂區物業設施管理委員會 | Parish Property & Facility Management Committee
- 堂區設備及資源管理委員會 | Parish Device & Resource Management Committee

附註 / Note:

- \* 常務小組 / 團體各選一名代表加入幹事會當「團體議員」 (共10人)
- \* Each Standing Committee / Community to appoint one representative to join the Executive Committee as "Organization Councillor" (Total 10 people).



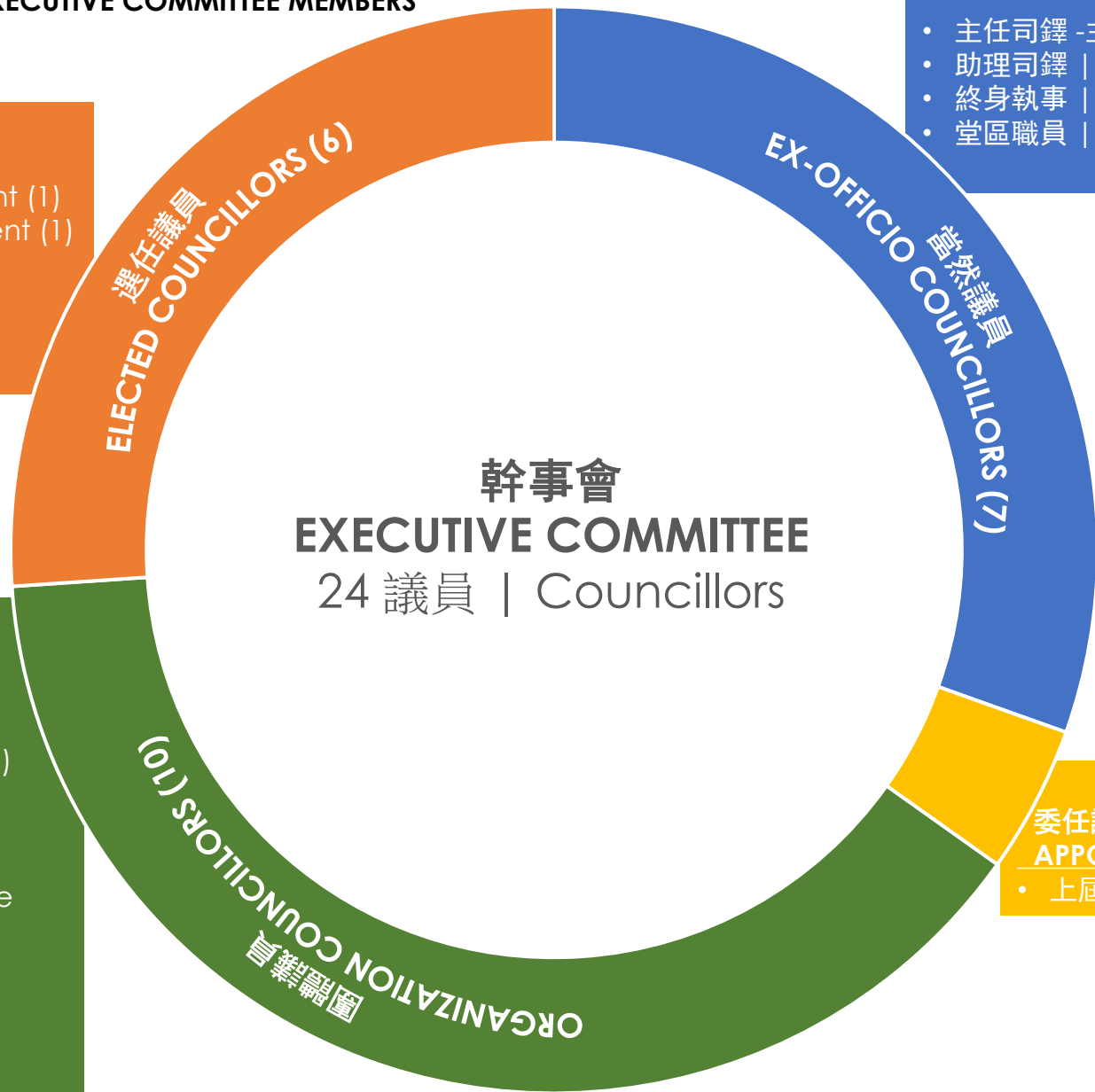
堂區牧民議會 - 幹事會成員組合  
 PARISH PASTORAL COUNCIL - EXECUTIVE COMMITTEE MEMBERS

- 會長 | Chairperson (1)
- 內務副會長 | Internal Affairs Vice President (1)
- 外務副會長 | External Affairs Vice President (1)
- 中文秘書 | Chinese Secretary (1)
- 英文秘書 | English Secretary (1)
- 司庫 | Treasurer (1)

- 傳道組 | Evangelization Group (1)
- 禮儀組 | Liturgical Group (1)
- 培育組 | Christian Formation Group (1)
- 青少年牧民組 | Youth Pastoral Group (1)
- 服務組 | Service Group (1)
- 文康組 | Entertainment Group (1)
- 機場團體 | Airport Community (1)
- 愉景灣中文團體 | Discovery Bay Chinese Community (1)
- 愉景灣英文團體 | Discovery Bay English Community (1)
- 東涌英文團體 | Tung Chung English Community (1)

- 主任司鐸-主席 | Parish Priest – President (1)
- 助理司鐸 | Assistant Parish Priest (2)
- 終身執事 | Permanent Deacon (3)
- 堂區職員 | Pastoral Staff (1)

- 委任議員  
**APPOINTED COUNCILLOR (1)**
- 上屆卸任會長 | Outgoing Chairperson



幹事會  
**EXECUTIVE COMMITTEE**  
 24 議員 | Councillors

ELECTED COUNCILLORS (6)  
 選任議員

EX-OFFICIO COUNCILLORS (7)  
 當然議員

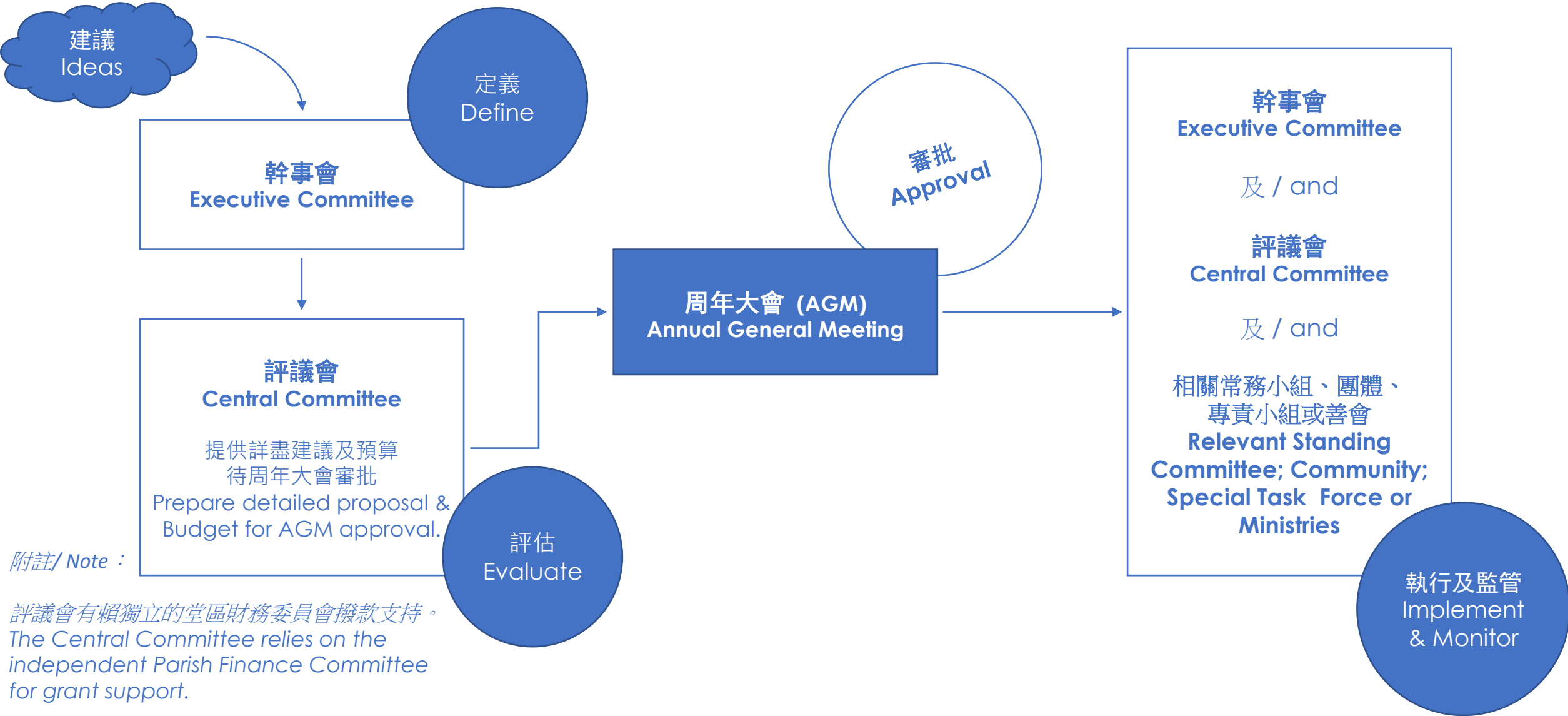
ORGANIZATION COUNCILLORS (10)  
 團體代表

委任議員  
**APPOINTED COUNCILLOR (1)**



堂區牧民議會 – 運作模式  
PARISH PASTORAL COUNCIL - OPERATION PROTOCOL

聖母訪親堂區  
VISITATION PARISH



附註/ Note :  
評議會有賴獨立的堂區財務委員會撥款支持。  
The Central Committee relies on the independent Parish Finance Committee for grant support.